

SAN MATEO SCIENCE CENTER

MARINERS ISLAND BLVD

901 / Floor 1

Single Tenant Floor Plan

± 10,700 Square Feet



SUITE 150

Lab Benches: 26*

Workstations: 20

Office/Huddle: 2

Conference Rooms: 1

Wellness Room: 1

*Casework provided

± 5,350 SF LAB

± 5,350 SF OFFICE

Bill Benton

Vice Chairman
415 274 4421
bill.benton@nmrk.com
Lic. #01247617

Eric Bluestein

Executive Managing Director
650 688 8547
eric.bluestein@nmrk.com
Lic. #01720416

John Kraft

Managing Director
650 358 5277
john.kraft@nmrk.com
Lic. #01787698

Neill Sherron

Partner, Portfolio Leasing
919 414 0320
nsherron@lfrp.com



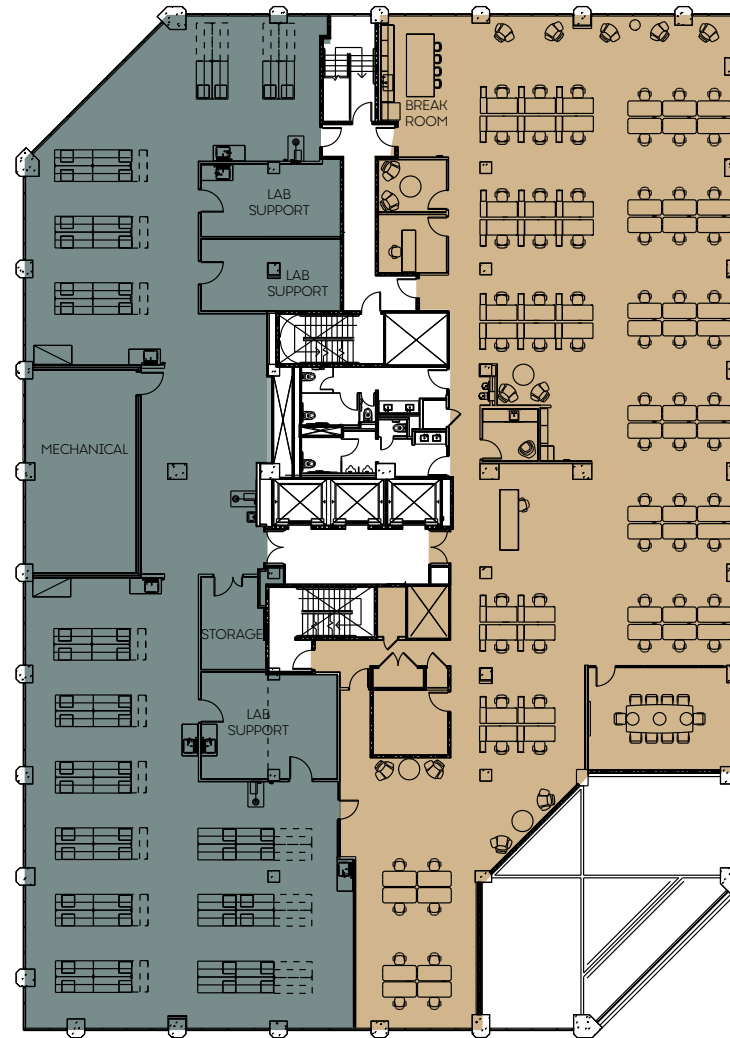
SAN MATEO / **SCIENCE CENTER**

MARINERS ISLAND BLVD
901 / Floor 2

Single Tenant Floor Plan
± 19,300 Square Feet

Lab Benches: 52*
Workstations: 70
Office/Huddle: 2
Conference Rooms: 1
Wellness Room: 1

*Casework provided



±9,650 SF LAB

±9,650 SF OFFICE

Bill Benton
Vice Chairman
415 274 4421
bill.benton@nrmk.com
Lic. #01247617

Eric Bluestein
Executive Managing Director
650 688 8547
eric.bluestein@nrmk.com
Lic. #01720416

John Kraft
Managing Director
650 358 5277
john.kraft@nrmk.com
Lic. #01787698

Neill Sherron
Partner, Portfolio Leasing
919 414 0320
nsherron@lfrp.com



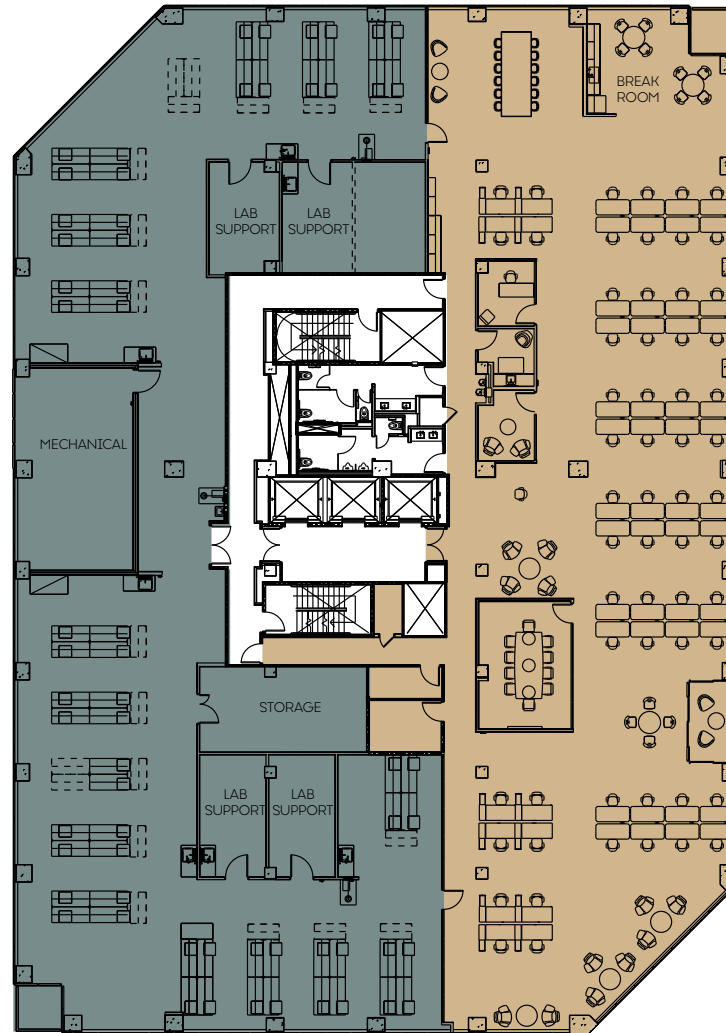
SAN MATEO / **SCIENCE CENTER**

MARINERS ISLAND BLVD

901 / Floor 3

Single Tenant Floor Plan

± 21,100 Square Feet



Lab Benches: 62*

Workstations: 60

Office/Huddle: 2

Conference Rooms: 1

Wellness Room: 1

*Casework provided

Bill Benton

Vice Chairman
415 274 4421
bill.benton@nmrk.com
Lic. #01247617

Eric Bluestein

Executive Managing Director
650 688 8547
eric.bluestein@nmrk.com
Lic. #01720416

John Kraft

Managing Director
650 358 5277
john.kraft@nmrk.com
Lic. #01787698

Neill Sherron

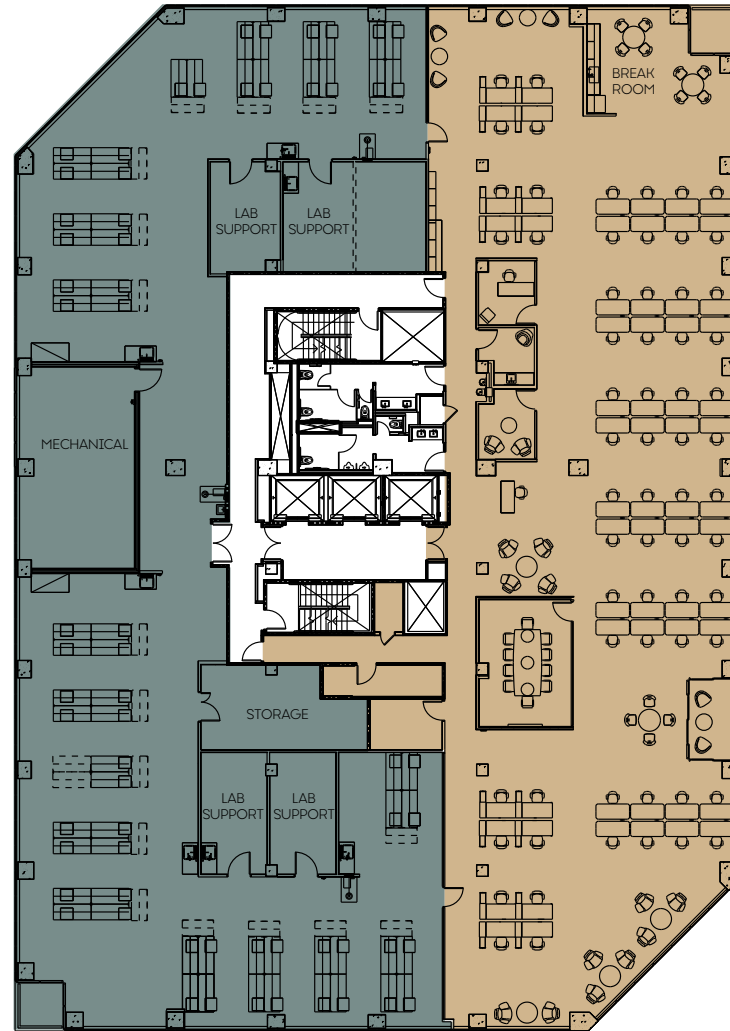
Partner, Portfolio Leasing
919 414 0320
nsherron@lfrp.com



SAN MATEO / **SCIENCE CENTER**

MARINERS ISLAND BLVD
901 / Floor 4

Single Tenant Floor Plan
± 21,000 Square Feet



- Lab Benches: 66*
- Workstations: 64
- Office/Huddle: 2
- Conference Rooms: 1
- Wellness Room: 1

*Casework provided

±10,500 SF LAB

±10,500 SF OFFICE

Bill Benton
Vice Chairman
415 274 4421
bill.benton@nrmk.com
Lic. #01247617

Eric Bluestein
Executive Managing Director
650 688 8547
eric.bluestein@nrmk.com
Lic. #01720416

John Kraft
Managing Director
650 358 5277
john.kraft@nrmk.com
Lic. #01787698

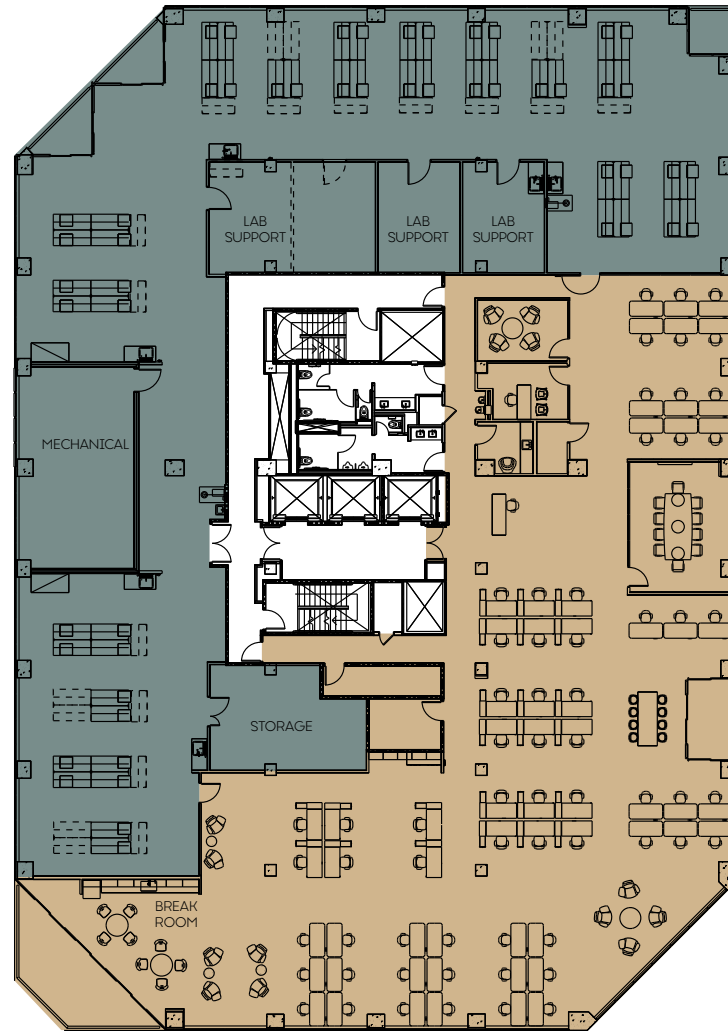
Neill Sherron
Partner, Portfolio Leasing
919 414 0320
nsherron@lfrp.com



MARINERS ISLAND BLVD

901 / Floor 5

Single Tenant Floor Plan
± 21,000 Square Feet



- Lab Benches: 52*
- Workstations: 63
- Office/Huddle: 2
- Conference Rooms: 1
- Wellness Room: 1

*Casework provided

Bill Benton
Vice Chairman
415 274 4421
bill.benton@nmrk.com
Lic. #01247617

Eric Bluestein
Executive Managing Director
650 688 8547
eric.bluestein@nmrk.com
Lic. #01720416

John Kraft
Managing Director
650 358 5277
john.kraft@nmrk.com
Lic. #01787698

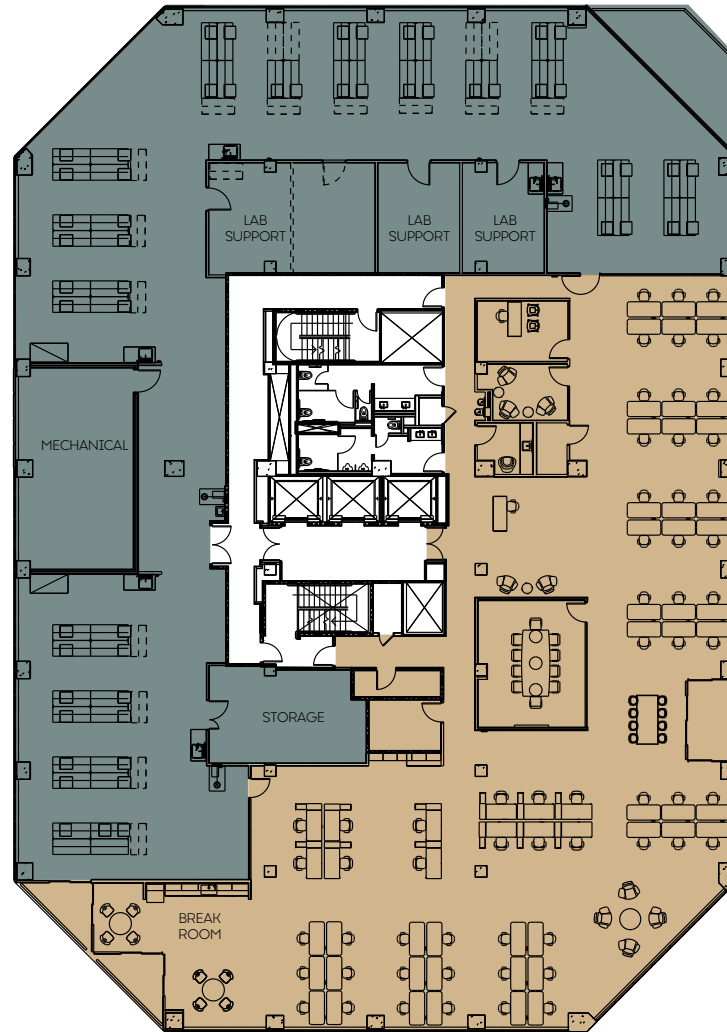
Neill Sherron
Partner, Portfolio Leasing
919 414 0320
nsherron@lfrp.com



SAN MATEO / **SCIENCE CENTER**

MARINERS ISLAND BLVD
901 / Floor 6

Single Tenant Floor Plan
± 20,600 Square Feet



- Lab Benches: 56*
- Workstations: 60
- Office/Huddle: 2
- Conference Rooms: 1
- Wellness Room: 1

*Casework provided

± 10,300 SF LAB ± 10,300 SF OFFICE

Bill Benton
Vice Chairman
415 274 4421
bill.benton@nrmk.com
Lic. #01247617

Eric Bluestein
Executive Managing Director
650 688 8547
eric.bluestein@nrmk.com
Lic. #01720416

John Kraft
Managing Director
650 358 5277
john.kraft@nrmk.com
Lic. #01787698

Neill Sherron
Partner, Portfolio Leasing
919 414 0320
nsherron@lfrp.com



MARINERS ISLAND BLVD

901 / Floor 7

Multi Tenant Floor Plan
± 19,200 Square Feet



SUITE 700

Lab Benches: 22*
Workstations: 34
Office/Huddle: 1
Conference Rooms: 1

SUITE 750

Lab Benches: 24*
Workstations: 19
Office/Huddle: 1
Conference Rooms: 1

Shared Wellness Room

*Casework provided

±9,500 SF SUITE 700 ±9,700 SF SUITE 750

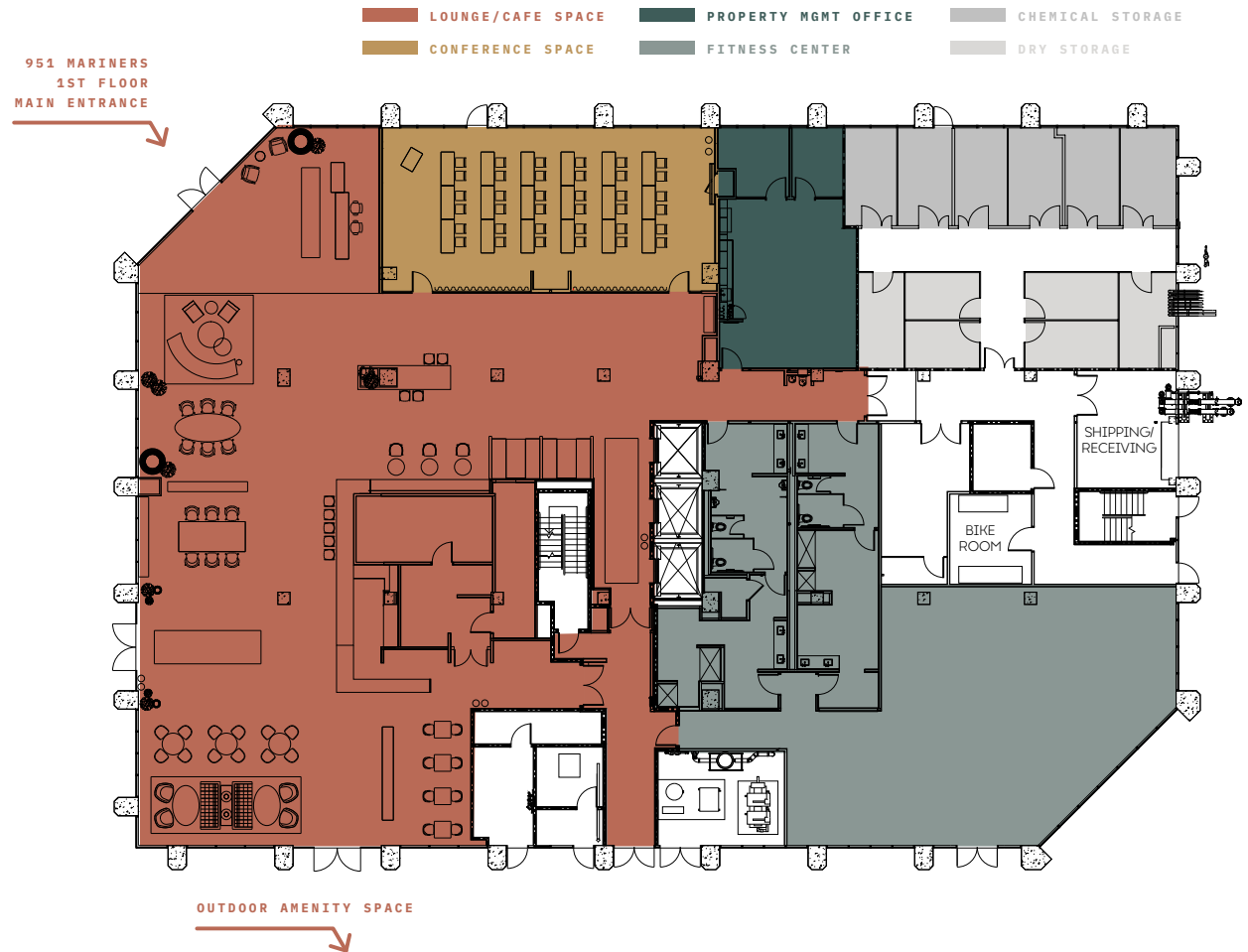
Bill Benton
Vice Chairman
415 274 4421
bill.benton@nrmk.com
Lic. #01247617

Eric Bluestein
Executive Managing Director
650 688 8547
eric.bluestein@nrmk.com
Lic. #01720416

John Kraft
Managing Director
650 358 5277
john.kraft@nrmk.com
Lic. #01787698

Neill Sherron
Partner, Portfolio Leasing
919 414 0320
nsherron@lfrp.com





Bill Benton
Vice Chairman
415 274 4421
bill.benton@nrmk.com
Lic. #01247617

Eric Bluestein
Executive Managing Director
650 688 8547
eric.bluestein@nrmk.com
Lic. #01720416

John Kraft
Managing Director
650 358 5277
john.kraft@nrmk.com
Lic. #01787698

Neill Sherron
Partner, Portfolio Leasing
919 414 0320
nsherron@lfrep.com



MARINERS ISLAND BLVD

951 / Floor 2

Multi Tenant Floor Plan
± 17,900 Square Feet



SUITE 200

Lab Benches: 18*
Workstations: 30
Office/Huddle: 2
Conference Rooms: 1

SUITE 250

Lab Benches: 28*
Workstations: 24
Office/Huddle: 2
Conference Rooms: 1

Shared Wellness Room

*Casework provided

± 8,800 SF SUITE 200 ± 9,100 SF SUITE 250

Bill Benton
Vice Chairman
415 274 4421
bill.benton@nrmk.com
Lic. #01247617

Eric Bluestein
Executive Managing Director
650 688 8547
eric.bluestein@nrmk.com
Lic. #01720416

John Kraft
Managing Director
650 358 5277
john.kraft@nrmk.com
Lic. #01787698

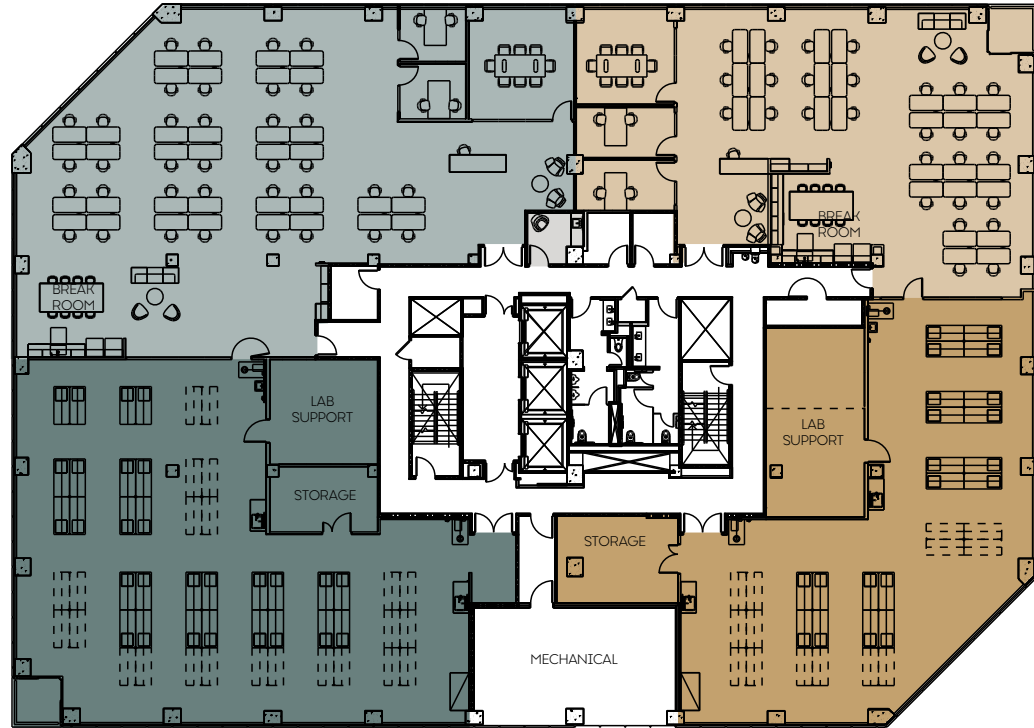
Neill Sherron
Partner, Portfolio Leasing
919 414 0320
nsherron@lfrp.com



MARINERS ISLAND BLVD

951 / Floor 3

Multi Tenant Floor Plan
± 20,000 Square Feet



SUITE 300

Lab Benches: 28*
Workstations: 36
Office/Huddle: 2
Conference Rooms: 1

SUITE 350

Lab Benches: 20*
Workstations: 28
Office/Huddle: 2
Conference Rooms: 1

Shared Wellness Room

*Casework provided

±11,200 SF SUITE 300 ±8,800 SF SUITE 350

Bill Benton

Vice Chairman
415 274 4421
bill.benton@nrmk.com
Lic. #01247617

Eric Bluestein

Executive Managing Director
650 688 8547
eric.bluestein@nrmk.com
Lic. #01720416

John Kraft

Managing Director
650 358 5277
john.kraft@nrmk.com
Lic. #01787698

Neill Sherron

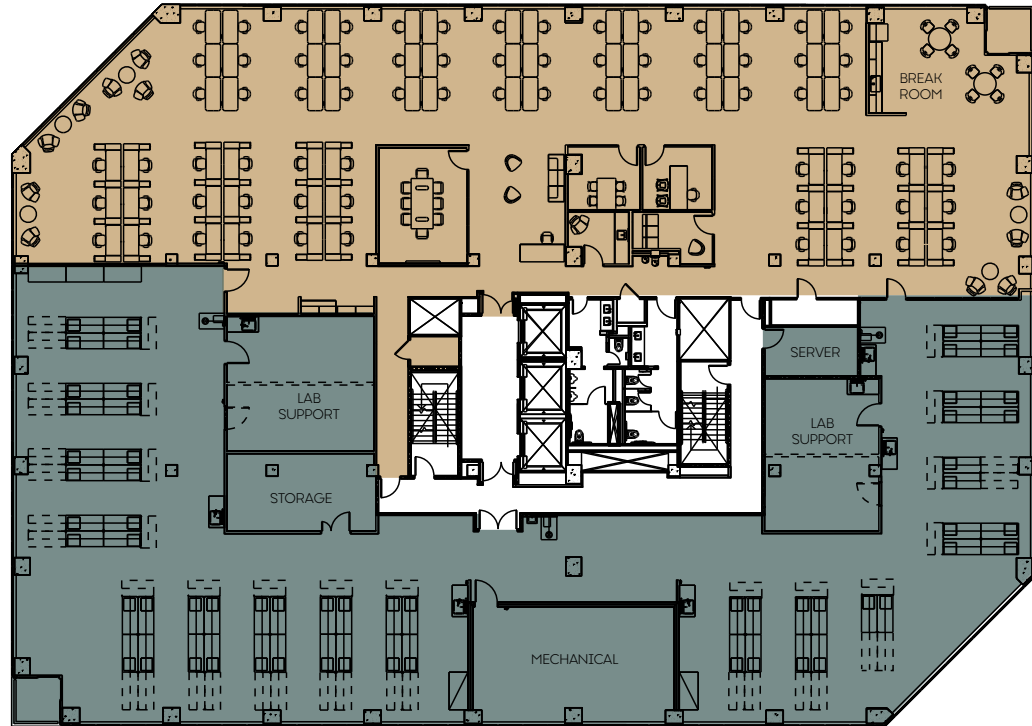
Partner, Portfolio Leasing
919 414 0320
nsherron@lfrp.com



MARINERS ISLAND BLVD

951 / Floor 4

Single Tenant Floor Plan
± 21,000 Square Feet



- Lab Benches: 60*
- Workstations: 72
- Office/Huddle: 3
- Conference Rooms: 1
- Wellness Room: 1

*Casework provided

±10,500 SF LAB

±10,500 SF OFFICE

Bill Benton
Vice Chairman
415 274 4421
bill.benton@nrmk.com
Lic. #01247617

Eric Bluestein
Executive Managing Director
650 688 8547
eric.bluestein@nrmk.com
Lic. #01720416

John Kraft
Managing Director
650 358 5277
john.kraft@nrmk.com
Lic. #01787698

Neill Sherron
Partner, Portfolio Leasing
919 414 0320
nsherron@lfrp.com



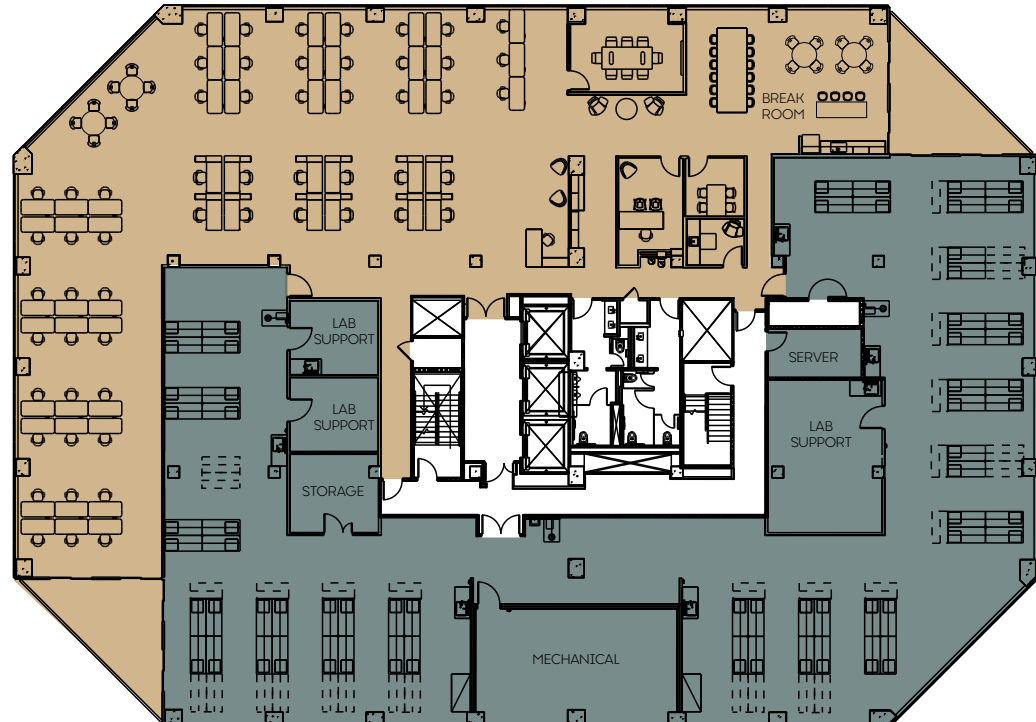
SAN MATEO / **SCIENCE CENTER**

MARINERS ISLAND BLVD

951 / Floor 7

Single Tenant Floor Plan

± 20,000 Square Feet



Lab Benches: 64*

Workstations: 57

Office/Huddle: 2

Conference Rooms: 1

Wellness Room: 1

*Casework provided

±10,000 SF LAB

±10,000 SF OFFICE

Bill Benton
Vice Chairman
415 274 4421
bill.benton@nrmk.com
Lic. #01247617

Eric Bluestein
Executive Managing Director
650 688 8547
eric.bluestein@nrmk.com
Lic. #01720416

John Kraft
Managing Director
650 358 5277
john.kraft@nrmk.com
Lic. #01787698

Neill Sherron
Partner, Portfolio Leasing
919 414 0320
nsherron@lfrp.com

