

**SAN MATEO** SCIENCE CENTER

MARINERS ISLAND BLVD

# 901 / Floor 1

Single Tenant Floor Plan

± 10,700 Square Feet



## SUITE 150

Lab Benches: 26\*

Workstations: 20

Office/Huddle: 2

Conference Rooms: 1

Wellness Room: 1

\*Casework provided

± 5,350 SF LAB

± 5,350 SF OFFICE

- LOUNGE/COMMON AREA
- CHEMICAL STORAGE
- DRY STORAGE

**Bill Benton**  
Vice Chairman  
415 274 4421  
bill.benton@nmrk.com  
Lic. #01247617

**Eric Bluestein**  
Executive Managing Director  
650 688 8547  
eric.bluestein@nmrk.com  
Lic. #01720416

**John Kraft**  
Managing Director  
650 358 5277  
john.kraft@nmrk.com  
Lic. #01787698

**Neill Sherron**  
Partner, Portfolio Leasing  
919 414 0320  
nsherron@lfrp.com



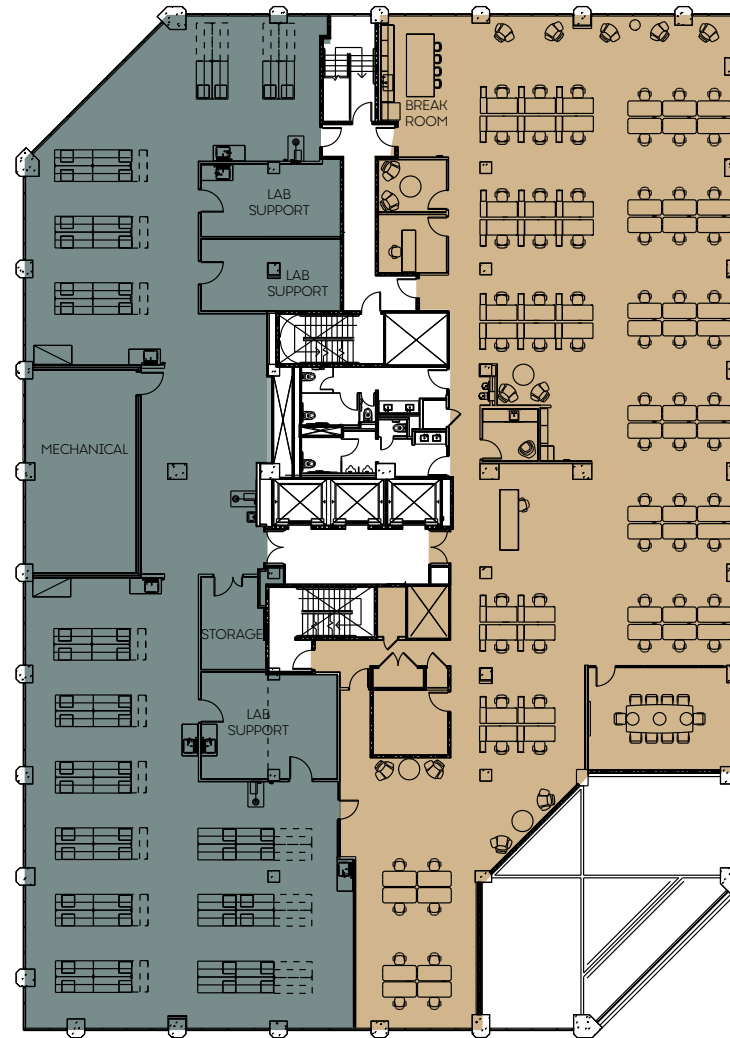
**SAN MATEO** / **SCIENCE CENTER**

MARINERS ISLAND BLVD  
**901 / Floor 2**

Single Tenant Floor Plan  
± 19,300 Square Feet

Lab Benches: 52\*  
Workstations: 70  
Office/Huddle: 2  
Conference Rooms: 1  
Wellness Room: 1

\*Casework provided



±9,650 SF LAB

±9,650 SF OFFICE

**Bill Benton**  
Vice Chairman  
415 274 4421  
bill.benton@nrmk.com  
Lic. #01247617

**Eric Bluestein**  
Executive Managing Director  
650 688 8547  
eric.bluestein@nrmk.com  
Lic. #01720416

**John Kraft**  
Managing Director  
650 358 5277  
john.kraft@nrmk.com  
Lic. #01787698

**Neill Sherron**  
Partner, Portfolio Leasing  
919 414 0320  
nsherron@lfrp.com



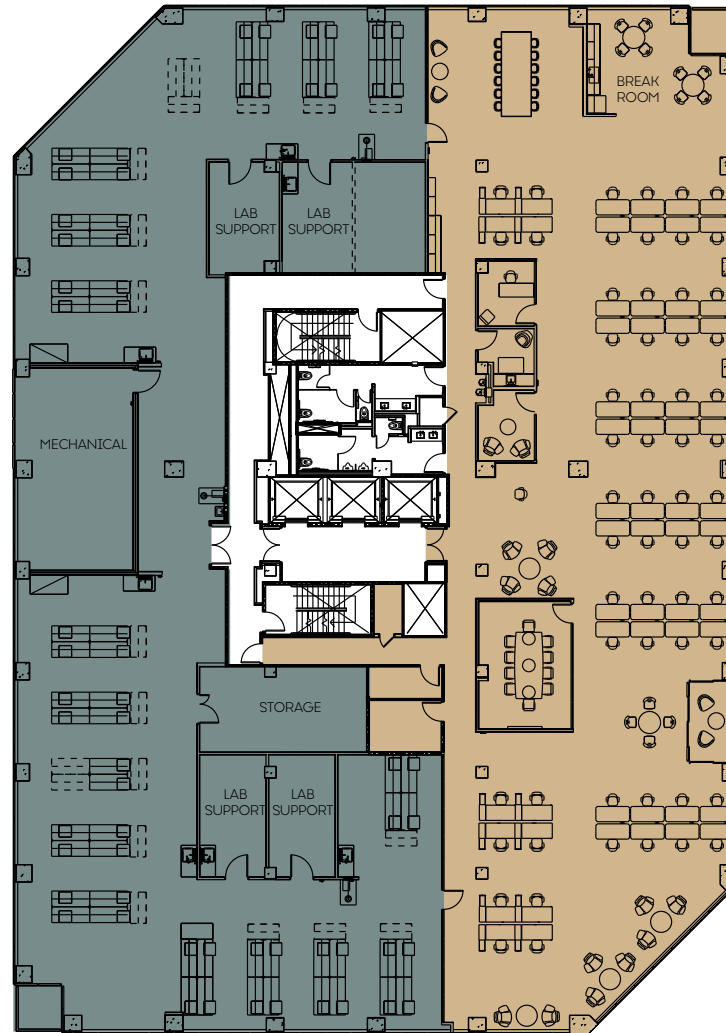
**SAN MATEO** / **SCIENCE CENTER**

MARINERS ISLAND BLVD

# 901 / Floor 3

Single Tenant Floor Plan

± 21,100 Square Feet



Lab Benches: 62\*

Workstations: 60

Office/Huddle: 2

Conference Rooms: 1

Wellness Room: 1

\*Casework provided

±10,550 SF LAB

±10,550 SF OFFICE

**Bill Benton**  
Vice Chairman  
415 274 4421  
bill.benton@nrmk.com  
Lic. #01247617

**Eric Bluestein**  
Executive Managing Director  
650 688 8547  
eric.bluestein@nrmk.com  
Lic. #01720416

**John Kraft**  
Managing Director  
650 358 5277  
john.kraft@nrmk.com  
Lic. #01787698

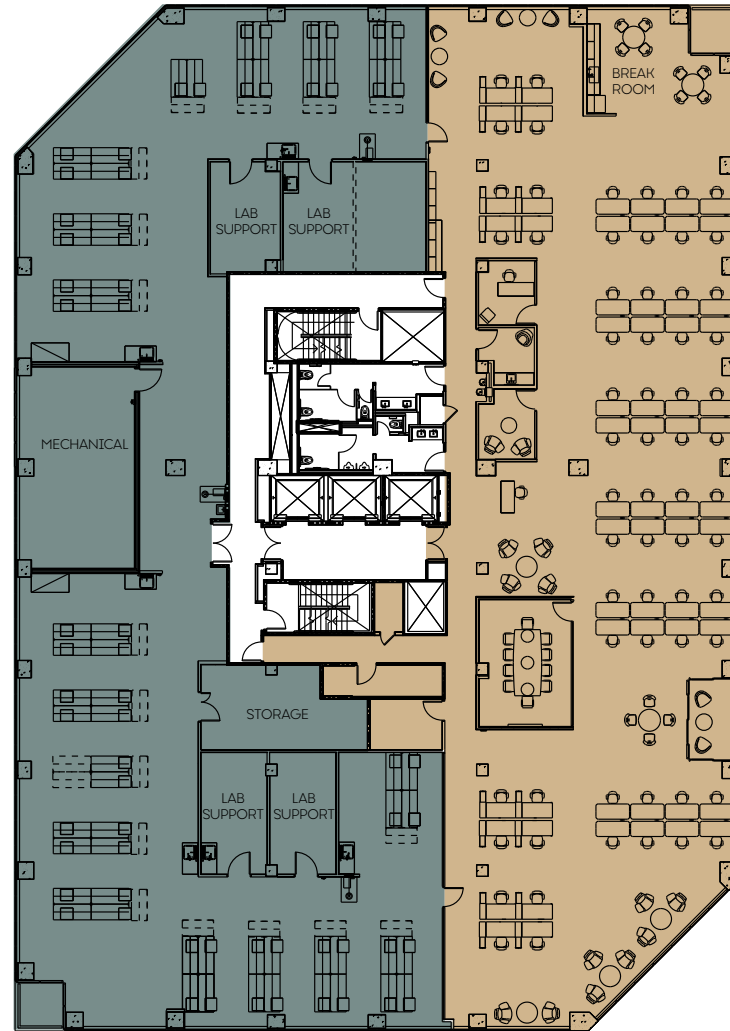
**Neill Sherron**  
Partner, Portfolio Leasing  
919 414 0320  
nsherron@lrfrep.com



**SAN MATEO** / **SCIENCE CENTER**

MARINERS ISLAND BLVD  
**901 / Floor 4**

Single Tenant Floor Plan  
± 21,000 Square Feet



- Lab Benches: 66\*
- Workstations: 64
- Office/Huddle: 2
- Conference Rooms: 1
- Wellness Room: 1

\*Casework provided

**Bill Benton**  
Vice Chairman  
415 274 4421  
bill.benton@nrmk.com  
Lic. #01247617

**Eric Bluestein**  
Executive Managing Director  
650 688 8547  
eric.bluestein@nrmk.com  
Lic. #01720416

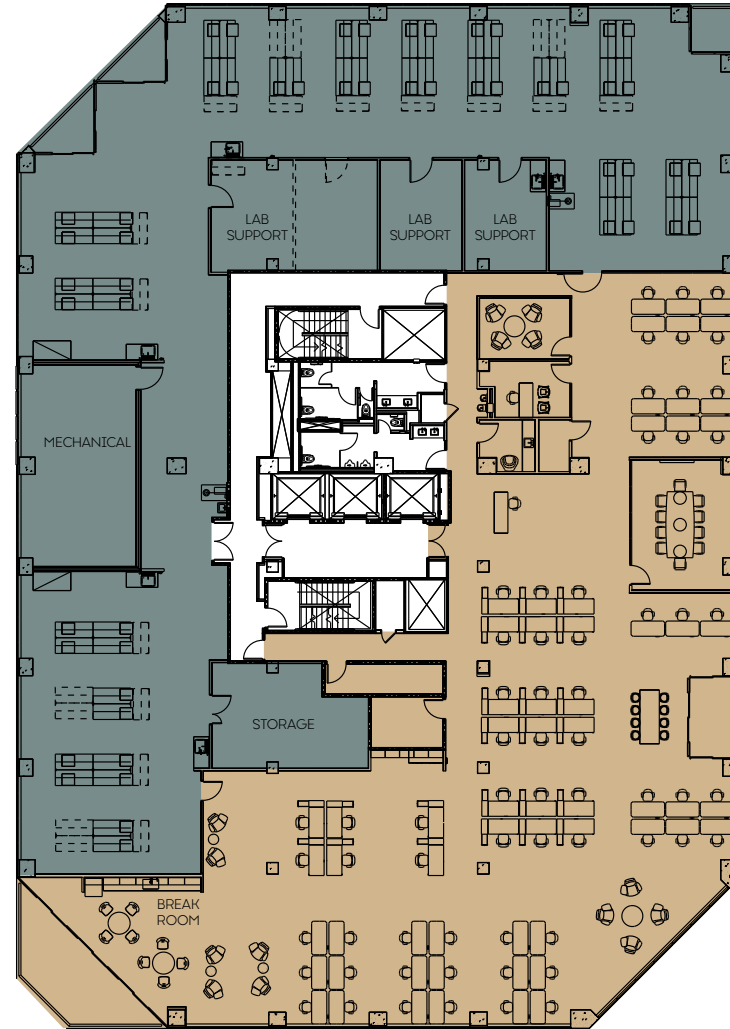
**John Kraft**  
Managing Director  
650 358 5277  
john.kraft@nrmk.com  
Lic. #01787698

**Neill Sherron**  
Partner, Portfolio Leasing  
919 414 0320  
nsherron@lfrp.com



MARINERS ISLAND BLVD  
901 / Floor 5

Single Tenant Floor Plan  
± 21,000 Square Feet



- Lab Benches: 52\*
- Workstations: 63
- Office/Huddle: 2
- Conference Rooms: 1
- Wellness Room: 1

\*Casework provided

±10,500 SF LAB      ±10,500 SF OFFICE

**Bill Benton**  
Vice Chairman  
415 274 4421  
bill.benton@nmrk.com  
Lic. #01247617

**Eric Bluestein**  
Executive Managing Director  
650 688 8547  
eric.bluestein@nmrk.com  
Lic. #01720416

**John Kraft**  
Managing Director  
650 358 5277  
john.kraft@nmrk.com  
Lic. #01787698

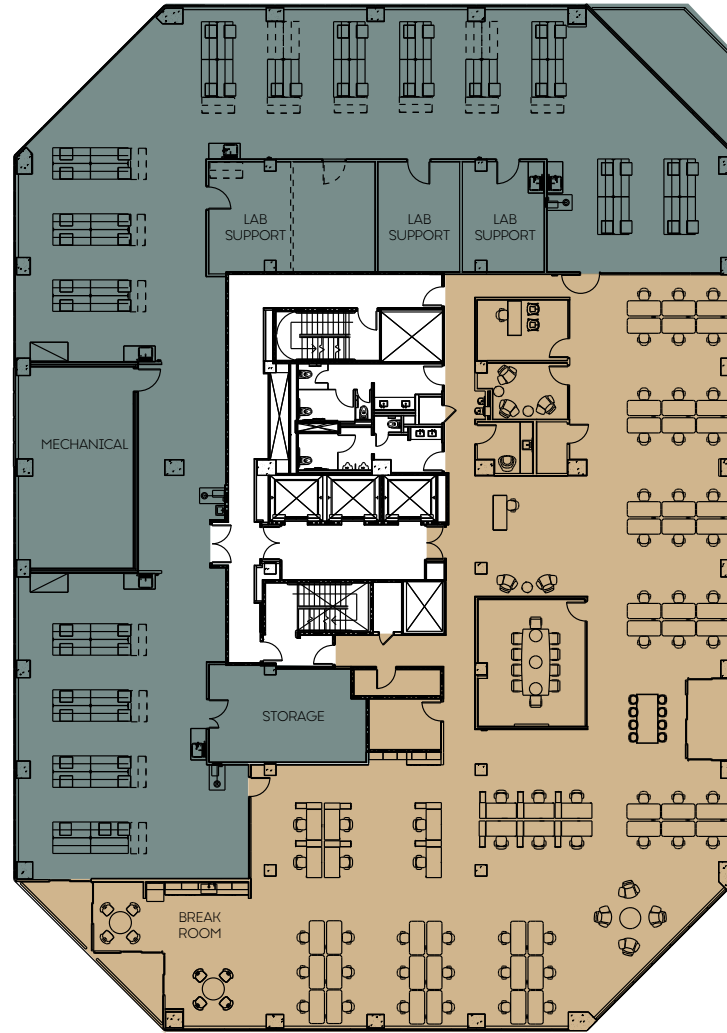
**Neill Sherron**  
Partner, Portfolio Leasing  
919 414 0320  
nsherron@lfrp.com



**SAN MATEO** / **SCIENCE CENTER**

MARINERS ISLAND BLVD  
**901 / Floor 6**

Single Tenant Floor Plan  
± 20,600 Square Feet



- Lab Benches: 56\*
- Workstations: 60
- Office/Huddle: 2
- Conference Rooms: 1
- Wellness Room: 1

\*Casework provided

± 10,300 SF LAB

± 10,300 SF OFFICE

**Bill Benton**  
Vice Chairman  
415 274 4421  
bill.benton@nrmk.com  
Lic. #01247617

**Eric Bluestein**  
Executive Managing Director  
650 688 8547  
eric.bluestein@nrmk.com  
Lic. #01720416

**John Kraft**  
Managing Director  
650 358 5277  
john.kraft@nrmk.com  
Lic. #01787698

**Neill Sherron**  
Partner, Portfolio Leasing  
919 414 0320  
nsherron@lfrp.com





Bill Benton  
Vice Chairman  
415 274 4421  
bill.benton@nrmk.com  
Lic. #01247617

Eric Bluestein  
Executive Managing Director  
650 688 8547  
eric.bluestein@nrmk.com  
Lic. #01720416

John Kraft  
Managing Director  
650 358 5277  
john.kraft@nrmk.com  
Lic. #01787698

Neill Sherron  
Partner, Portfolio Leasing  
919 414 0320  
nsherron@lfrep.com



MARINERS ISLAND BLVD

# 951 / Floor 2

Multi Tenant Floor Plan  
± 17,900 Square Feet



## SUITE 200

Lab Benches: 18\*  
Workstations: 30  
Office/Huddle: 2  
Conference Rooms: 1

## SUITE 250

Lab Benches: 28\*  
Workstations: 24  
Office/Huddle: 2  
Conference Rooms: 1

Shared Wellness Room

\*Casework provided

± 8,800 SF SUITE 200 ± 9,100 SF SUITE 250

**Bill Benton**  
Vice Chairman  
415 274 4421  
bill.benton@nrmk.com  
Lic. #01247617

**Eric Bluestein**  
Executive Managing Director  
650 688 8547  
eric.bluestein@nrmk.com  
Lic. #01720416

**John Kraft**  
Managing Director  
650 358 5277  
john.kraft@nrmk.com  
Lic. #01787698

**Neill Sherron**  
Partner, Portfolio Leasing  
919 414 0320  
nsherron@lfrp.com





MARINERS ISLAND BLVD

# 951 / Floor 3

Multi Tenant Floor Plan  
± 20,000 Square Feet



## SUITE 300

Lab Benches: 28\*  
Workstations: 36  
Office/Huddle: 2  
Conference Rooms: 1

## SUITE 350

Lab Benches: 20\*  
Workstations: 28  
Office/Huddle: 2  
Conference Rooms: 1

Shared Wellness Room

\*Casework provided

±11,200 SF SUITE 300 ±8,800 SF SUITE 350

### Bill Benton

Vice Chairman  
415 274 4421  
bill.benton@nrmk.com  
Lic. #01247617

### Eric Bluestein

Executive Managing Director  
650 688 8547  
eric.bluestein@nrmk.com  
Lic. #01720416

### John Kraft

Managing Director  
650 358 5277  
john.kraft@nrmk.com  
Lic. #01787698

### Neill Sherron

Partner, Portfolio Leasing  
919 414 0320  
nsherron@lfrp.com

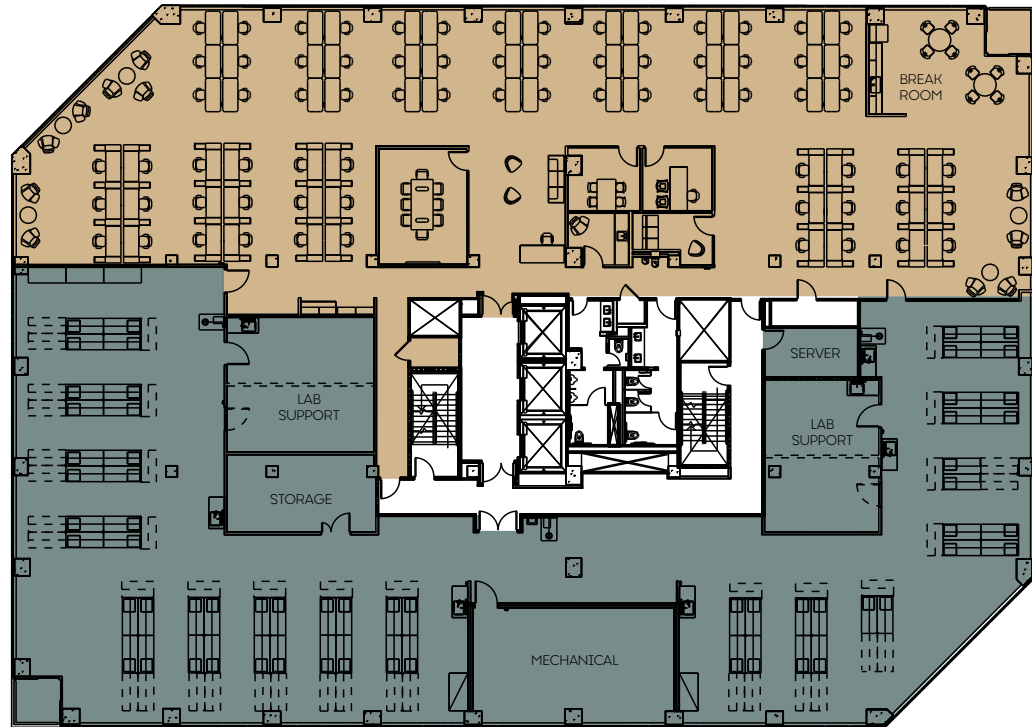


MARINERS ISLAND BLVD

# 951 / Floor 4

Single Tenant Floor Plan

± 21,000 Square Feet



Lab Benches: 60\*

Workstations: 72

Office/Huddle: 3

Conference Rooms: 1

Wellness Room: 1

\*Casework provided

±10,500 SF LAB

±10,500 SF OFFICE

### Bill Benton

Vice Chairman  
415 274 4421  
bill.benton@nrmk.com  
Lic. #01247617

### Eric Bluestein

Executive Managing Director  
650 688 8547  
eric.bluestein@nrmk.com  
Lic. #01720416

### John Kraft

Managing Director  
650 358 5277  
john.kraft@nrmk.com  
Lic. #01787698

### Neill Sherron

Partner, Portfolio Leasing  
919 414 0320  
nsherron@lfrp.com

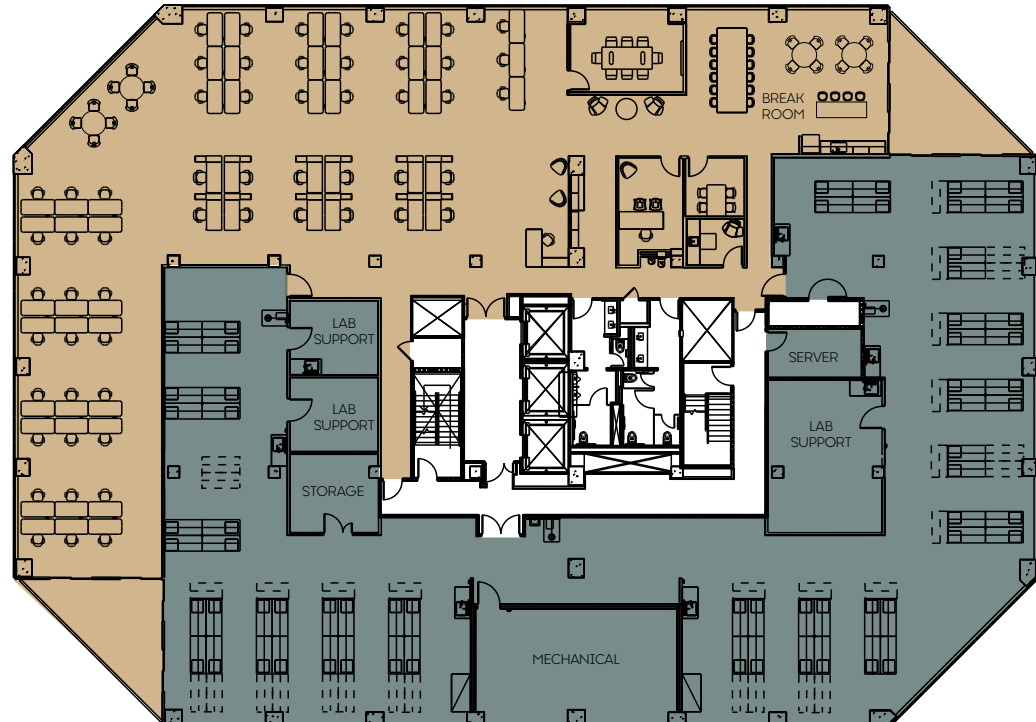


**SAN MATEO** / **SCIENCE CENTER**

MARINERS ISLAND BLVD

# 951 / Floor 7

Single Tenant Floor Plan  
± 20,000 Square Feet



- Lab Benches: 64\*
- Workstations: 57
- Office/Huddle: 2
- Conference Rooms: 1
- Wellness Room: 1

\*Casework provided

■ ±10,000 SF LAB      ■ ±10,000 SF OFFICE

**Bill Benton**  
Vice Chairman  
415 274 4421  
bill.benton@nrmk.com  
Lic. #01247617

**Eric Bluestein**  
Executive Managing Director  
650 688 8547  
eric.bluestein@nrmk.com  
Lic. #01720416

**John Kraft**  
Managing Director  
650 358 5277  
john.kraft@nrmk.com  
Lic. #01787698

**Neill Sherron**  
Partner, Portfolio Leasing  
919 414 0320  
nsherron@lfrp.com

